

# INNCOM<sup>®</sup>

by Honeywell



*Mandarin Oriental Barcelona*

## 2015 Product Catalog

**Honeywell**

**INNCOM® by Honeywell**

Honeywell Commercial Control Systems

277 West Main Street, Niantic, CT 06357 | USA

T: 860.739.4468 | F: 860.739.4460

[www.inncom.com](http://www.inncom.com)

Copyright 2015 by Honeywell International Inc. All rights reserved. Printed in the United States of America. No part of this publication may be reproduced, stored in a retrieval system, or transmitted in any form by any means, electronic, mechanical, photocopy, recording or otherwise without the prior written approval of Honeywell International Inc.

**Table of Contents**

**About INNCOM by Honeywell..... 7**

**About this Catalog / Purpose ..... 9**

A Note on Part Numbers..... 9

Links in this catalog direct you to our website ..... 9

A Note on Abbreviations ..... 9

**Integrated Room Automation Systems ..... 10**

**INNcontrol™ 3 Software and Deep Mesh Network ..... 11**

**Energy Management Systems..... 12**

E528 Smart Digital Thermostats..... 12

E528 Back Mounting Plate ..... 12

E528 Dust Cover ..... 12

E527 Smart Digital Thermostats..... 13

E529 Wireless Battery Operated Thermostats..... 13

MODEVA® Glass Series Thermostats ..... 14

**Relays and Controllers ..... 15**

X05B Expander Card..... 15

V50H Expander Card ..... 15

X10 Low Voltage Interface..... 15

X06 Relay Pack Series..... 16

X47 Universal Relay Pack..... 17

X06 DIN Rail Relay Pack..... 17

X08 Drape Controller..... 17

X05R.8 Relay Pack ..... 18

X05W Williams FCU Controller ..... 19

X09 Master Relay ..... 18

**Light Switches / Lamp Controls / Load Center Dimmers ..... 20**

Designer Series Switches..... 21

MCM4 DS Controller ..... 21

INNtouch™ Series switches ..... 22

Custom Devices from EEC..... 23

S-Series Switches ..... 25

MODEVA Glass Series Switches..... 24

MODEVA Part Numbers and Colors..... 25

EVORA™ Switch Series..... 26

EVORA Switch Configurations ..... 27

MODEVA Series Switches.....	26
MODEVA Series Switches.....	27
EVORA Series Switches.....	28
EVORA Series Switches.....	29
L506.RF Lamp Controller.....	30
L208 Lamp Controller.....	30
SL208.1-L208 Local Lamp Switch.....	30
L206 Lamp Controller.....	31
SL210 Battery Powered RF Lamp Switch.....	33
Load Center Dimmers.....	33
D254.DIN.US 2 Channel TRIAC Dimmer.....	33
D254.DIN.CN 2 Channel TRIAC Dimmer.....	33
D254.FET 2 Channel MOSFET Dimmer.....	33
<b>Tabletop Controllers and Guest Interface Devices.....</b>	<b>34</b>
TBL-80LCD Tabletop Controller.....	34
TBL-70 Tabletop Controller.....	34
IRAS on the iPad.....	35
<b>Motion Sensors / Door Switches / CELS.....</b>	<b>36</b>
K594 Motion Detector.....	36
K594.RF Motion Detector.....	36
K595.RF Motion Detector.....	36
S541.IR /RF Wireless Door Switch / Transmitter Switch.....	37
S241 Magnetic Door Switch.....	37
S241 Recessed Magnetic Contacts.....	37
<b>Power Supplies / Installation Devices / Equipment.....</b>	<b>39</b>
PS563 Nema Transformer.....	39
PS564 SMPS Universal Input.....	39
PS564.DIN Universal Input.....	39
PS565 Power Supply.....	39
PS567 Meanwell Power Supply.....	40
RT1 Remote Thermistor.....	40
PS576 Power Supply.....	40
RT3 / RT4 Remoter Thermistor.....	41
CHM-S Door Chime.....	41
B564 System 5 Interface Module.....	41
<b>Protocol Converters / Transceivers / Guestroom Network Hardware.....</b>	<b>42</b>
B574 Edge Router / PC-803.RF Protocol Converter.....	42
B576 Rack Mounted Edge Router.....	42
PC-501 Protocol Converter.....	43
PC-502 S5 bus to RF Protocol Converter.....	43

TXR505.D Decora box IR5 Transceiver .....	43
RTD-LCINC Module .....	43
HUB Multiport Ethernet Hub .....	43
TXR505.R Remote IR5 Eye5 Transceiver .....	44
X485 Interface Board.....	44
POE Switch Module.....	44
PC485 / RS485 Communication Module.....	44
PC485.S5—RS485 to S5 bus Protocol Converter .....	44
<b>INNCOM Supported Interfaces .....</b>	<b>45-48</b>
<b>Programming, Commissioning &amp; Diagnostic (PCD) Tools.....</b>	<b>49</b>
ICP (In-Circuit Programmer).....	49
ES-1 Key .....	49
DM485 Dongle.....	49
USB Sneezer (PC501) .....	50
STM32/STLink.....	50
CC Debugger.....	50
ST& ICP Programmer.....	50

## About INNCOM® by Honeywell

**INNCOM by Honeywell has an award-winning history that began in the hotel market in 1986.** Its systems and client solutions include advanced hardware and software for Energy Management, Integrated Room Automation, and Systems Monitoring for the global lodging, healthcare, and educational housing markets.

The company's systems are installed in over 1,000,000 rooms worldwide, and our clients range from the most prestigious 5-star hotels to specialty limited-service properties. We are proud to serve the needs of Accor, Carlson, Fairmont, Four Seasons, Hard Rock, Hilton, Hyatt, InterContinental, Jumeirah, Kimpton, La Quinta, Mandarin Oriental, Marriott, Oberoi, Radisson, Rock-resorts, Rosewood, Starwood, and Taj among others, as well as many independent properties.

### The company's history of innovation includes

- *INNcontrol™ 3 Management System Software with 3D display technology*
- *MODEVA® Glass switches*
- *EVORA™ Backlit switches*
- *TBL-80LCD Controller*
- *Smart Digital Thermostats*
- *The award-winning, patented ecoMODE®, a new way for guests to opt into a hotel's sustainability program and save energy with the simple touch of a button*
- *Designer Series fully customizable system of guest room controls for temperature, lighting, and more*
- *RF wireless mesh network for central control of energy management*
- *Shared Ethernet backbone for guestrooms to accommodate control functionality and broadband services*
- *Diffuse mode, fluorescent-immune infrared communications protocol for guestrooms*
- *Smart Digital Thermostats incorporating logic board, sensors, and relays in a single housing*
- *Automatic minibar access reporting system*
- *Wireless infrared and RF online lock control system (CELS)*
- *Total lighting control system for hotel guestrooms featuring lighting "scenes," 256-point dimming, and remote infrared control*
- *First fully online guestroom control system with on-site and remote monitoring of HVAC, lighting, and advanced energy management algorithms*
- *INNCOM is a pioneer and leader in offering integration with other hospitality technology providers and has established relationships with a vast number of companies such as*
  - *In-Room Guest Services: DigiValet, iRiS Guest Valet, Intelity*
  - *Lighting: Lutron, Clipsal, Crestron*
  - *Motorized Drapes and Shades: BTX, Makita, Silent Gliss, Somfy*
  - *Signage and Wall Plates: EEC, Axxess Industries*
  - *Electronic Locks: VingCard, Timelox, Kaba/Saflok, Hafele, SALTO*
  - *Minibars: Bartech*
  - *Building Automation Systems: BAS Systems using BACNet*
  - *Property Management Systems: Fidelio (Micros Opera), Springer-Miller, Hilton21, HIS, HSIA, IHS, HTNG XML / SOAP, Libeca, LMS / IAD, OnQueue, Scientific Atlanta*
  - *Maintenance Management: M-Tech / HotSOS*
  - *Content Providers: Enseo, FCS*

**INNCOM**  
by Honeywell



*INNCOM by Honeywell's Automated Guestroom Systems played a lead role in LEED certification at Napa Valley's Bardessono luxury boutique and spa.*

*Bardessono was only the third hotel in the world to receive this prestigious recognition.*



## Purpose

This catalog is intended to provide accurate product names, photos, and part numbers with clear descriptions. The document is not meant to be a detailed technical guide to the specifications and architecture of any product—that information continues to reside in the individual product documents.

## A Note on Part Numbers

In general, the part numbers listed here are for the base system or base with some options. Anywhere it is indicated that an ordering guide should be referenced for more specific information on a part number, please contact your Sales Representative or Authorized Systems Integrator.

## Digital Catalog

A copy of our digital catalog and a High Resolution Printable version are available for download on our website: <http://www.inncom.com/resources/literature>. You may also refer to our online catalog: <http://www.inncom.com/catalog>

## A Note on Abbreviations

For the sake of brevity, this catalog uses many common abbreviations and acronyms. For clarity, the table below lists the full name with the abbreviation for reference.

Abbrev.	Term	Description
CINET	Central Interface Network	An INNCOM by Honeywell networked system, managed by a server
DDC	Direct Digital Control	Programmable control of HVAC modules
DMN	Deep Mesh Network	INNCOM by Honeywell's 2.4Ghz wireless RF protocol
DIN	Deutsches Institut für Normung e.V.	German Standardization Institute (mounting rails definition)
	Edge Router	Device for bridging a wired Ethernet with a Deep Mesh Network segment
EMS	Energy Management System	Intelligent, automated control of cooling, heating and lighting
FCU	Fan Coil Unit	Heating or cooling coil and fan unconnected to ductwork
DM485	Deep Mesh Network RS485	Modern RS485 network for managing guestroom data
FLN5	Floor Level Network 5 (legacy)	Legacy RS485 network for managing guestroom data
HVAC	Heating, Ventilating, Air Conditioning	The equipment and controls for regulating room environment.
I / O	Input / Output	Communication between systems
IR	Infrared	Wireless communication method using light
IRAS	Integrated Room Automation System	Devices interlinked for intelligent control of guestroom
PAN	Personal Area Network	Limited area communications network
PIR	Passive infrared	IR motion detection used for occupancy sensing
PTAC	Packaged Terminal Air Conditioner	Self-contained air conditioner installed through the wall of rooms with an outside wall
RF	Radio frequency	Wireless communication using radio waves
S5	S5 bus	Connector for wired power / communication
VAC	Volts of Alternating Current	Typical measurement for line-powered devices
VDC	Volts of Direct Current	Typical measurement for low-powered devices



INNCOM® BY Honeywell IRAS AND DEEP MESH SYSTEMS



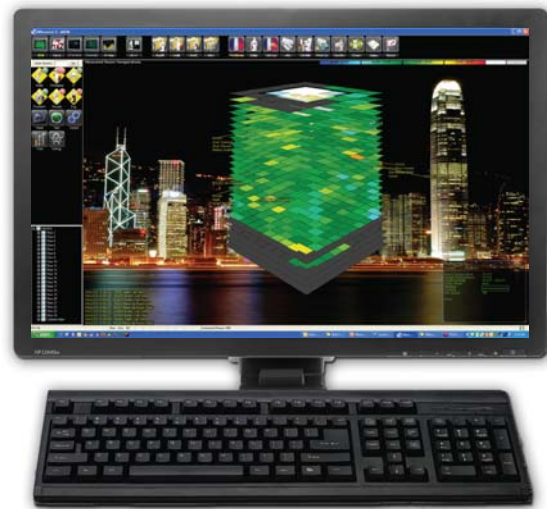
## INNcontrol™ 3

INNcontrol™ 3 is used for real-time control of energy usage in rooms and to gather and manage information from intelligent INNCOM by Honeywell devices and sensors. The data is automatically processed to generate historical trends, reports, and information for use by housekeeping, engineering, security, and other hotel staff. INNcontrol 3 also provides the gateway and backbone for Central Electronic Lock Control (CELS). It uses a seamless interface between the guestroom lock and the central server, giving the hotel real-time, bi-directional access to the lock.

### FEATURES

- *Monitors HVAC equipment in real-time; reports malfunctioning units.*
- *Monitors humidity levels in each room and reports rooms exceeding acceptable threshold.*
- *Reports rooms that are occupied for extended periods but not rented.*
- *Monitors guestroom network connection and reports non-communicating rooms.*
- *Reports low battery level in room devices and rooms that show constant occupancy.*

- *Reports property-centric events such as domestic hot water and utility company demand events.*
- *Reports lost web access network (WAN) connection and property management interface connections.*
- *Tracks and reports equipment run-time vs. baseline of rooms running without Energy Management control.*



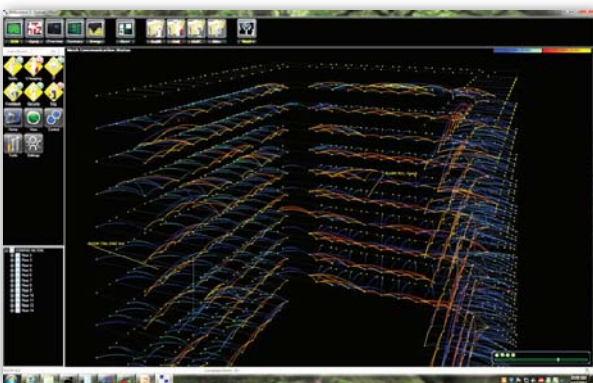
## Deep Mesh Network

The INNCOM Deep Mesh Network (DMN) architecture provides a very cost effective, self-forming wireless network. INNCOM's DMN eliminates the need for multiple radios and networks that are densely populated with costly auxiliary

routers and PAN coordinators that support a limited number of rooms.

A typical INNCOM network needs only one Edge Router for up to 250 rooms; this highly efficient architecture reduces installation cost associated with traditional networks along with ongoing maintenance costs to keep other systems up and running. The DMN also eliminates or greatly reduces cabling and electrical power requirements necessary to install other systems.

Unlike other network systems which require an extensive installation effort, network cabling, and electrical power for devices, the INNCOM DMN requires minimal installation effort, since the network infrastructure is embedded in the thermostat.



## Direct Digital Control Thermostats

INNCOM by Honeywell provides thermostat solutions in three fundamental applications. The thermostats described in this section can be configured to operate in each of the three applications.

### Digital Thermostat—Standalone

A programmable DDC thermostat for standalone HVAC control.

### Digital Thermostat with EMS

A programmable DDC thermostat designed for in-room energy management typically requiring wired or wireless door switch monitor and motion sensor.

### Digital Thermostat with Centrally Controlled EMS

A programmable DDC thermostat designed for in-room energy management typically requiring wired or wireless door switch monitor and motion sensor. The thermostat is wired or wirelessly networked to a server which monitors the system through the use of INNCOM by Honeywell's INNcontrol 3 application.

## e528

e528 provides temperature control, humidity monitoring, and motion detection for energy efficient management of the HVAC system. It is the core of a highly effective EMS and the media center for other amenity controls and third-party interfaces. Flexibly configured with on-board control relays, the e4 series provides efficient control, monitoring, reporting, and comfort for guestrooms.

### Product Specification

- Temperature and humidity sensing input
- Remote temperature sensing
- Light level detection
- Motion detection
- Fully customizable programming to operate specific HVAC, FCU, and PTAC units
- Digital input (door switch monitoring)
- Voltage: 12VAC to 277VAC input models available
- Relay contact ratings: Ratings ranging from 12VAC to 277VAC. See datasheet.
- Wired S5 bus or RS485 or wireless IR or RF Deep Mesh communication
- ecoMODE



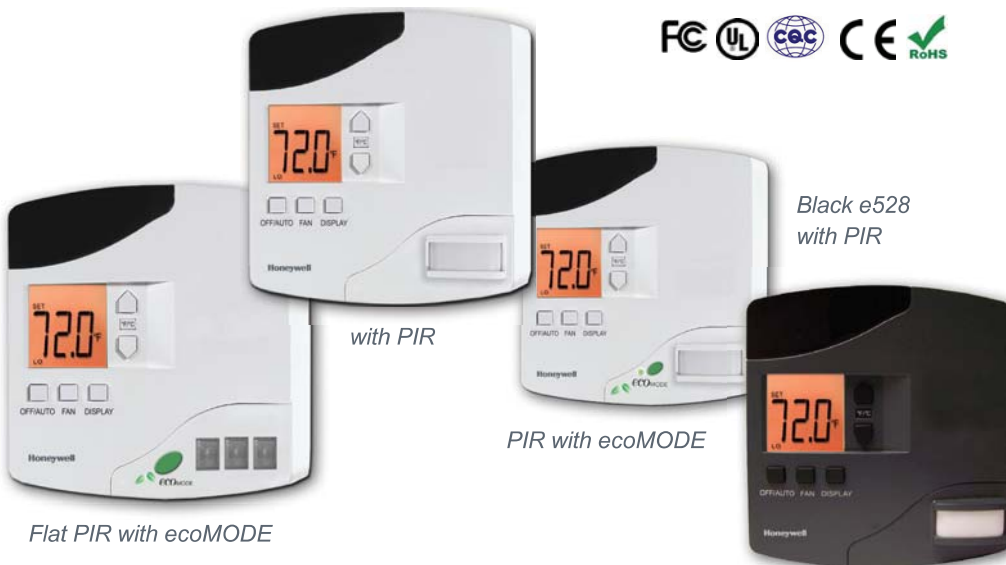
Dust Cover  
PN: 53-9012.LQ



Basic Model

Please refer to the e528 Smart Digital Thermostat ordering guide for more specific information and all part numbers.

HVAC-CONTROLLER



Flat PIR with ecoMODE

with PIR

PIR with ecoMODE

Black e528  
with PIR

## e529

e529 wireless battery operated thermostat provides temperature control, humidity monitoring, and motion detection for energy efficient management of the HVAC system. The e529 can be equipped with ecoMODE to provide additional energy saving benefits. The e529 contains a wireless IR or RF (Deep Mesh) transceiver for IRAS communications towards an external relay pack such as the X47, X07, or X06 for actuating the HVAC equipment.



### Product Specification

- Fully customizable programming to operate specific HVAC, FCU, and PTAC units
- Up to 2 year battery life
- Wireless IR or RF Deep Mesh communication
- Temperature and humidity sensing
- Light level detection
- Motion detection
- ecoMODE

Please refer to the e529 Smart Digital Thermostat ordering guide for more specific information and all part numbers.



HVAC-CONTROLLER

## e527

e527 is a thermostat designed for British gang box applications. It provides temperature control, humidity monitoring, and motion detection for energy efficient management of the HVAC system. The e527 can be equipped with ecoMODE to provide additional energy saving benefits. The e527 contains a wired S5 bus or RS485 and wireless RF (Deep Mesh) transceiver for IRAS communications towards an external relay pack such as the X47, X07, or X06 for actuating the HVAC equipment. The e527 can be equipped with a mounting plate that will allow it to mount on an American double gang box.

### Product Specification

- Fully customizable programming to operate specific HVAC, FCU, and PTAC units
- Temperature and humidity sensing
- Remote temperature sensing
- Light level detection
- Motion detection
- Digital input (door switch monitoring)
- Voltage: 12VDC
- Wired S5 bus or RS485 or wireless RF Deep Mesh communication
- British gang box or American double gang box mounting
- ecoMODE



Please refer to the e527 Smart Digital Thermostat ordering guide for more specific information and all part numbers.

e527-FS with PIR



PIR with ecoMODE

e527 Basic Model



e527-FS with PIR Black

HVAC-CONTROLLER

## MODEVA® Thermostat

The MODEVA thermostat controls temperature using a sleek capacitive touch user interface. The MODEVA thermostat can be equipped with ecoMODE to provide additional energy saving benefits. The MODEVA thermostat is wired (S5 bus) for IRAS communications towards an external relay pack such as the X47, X07, or X06 for actuating the HVAC equipment and for sensing temperature and humidity.

### Product Specification

- Fully customizable user interface color text and font options
- Fully customizable programming to operate specific HVAC, FCU, and PTAC units
- Digital input (door switch monitoring)
- Screwless magnetic mounting
- Voltage: 12VDC
- Wired S5 bus communications
- Available in American single gang vertical or horizontal gang box mounting or British gang box mounting
- ecoMODE



Please refer to the MODEVA ordering guide for more specific information and all part numbers.

MODEVA-SYSTEM

Standard colors available for MODEVA thermostats are shown below. Custom colors selected from the RAL or Pantone color guides are also available at an additional cost.



INNCOM by Honeywell will provide basic font suggestions, but you may use any font you like. If it is a font we don't have, we may ask you to supply it. Our experience has shown that bold and simple fonts are generally best suited for guest-facing devices.

Suggested Modeva Button Function Placement  
(for ease of programming and design)



## Relays & Controllers

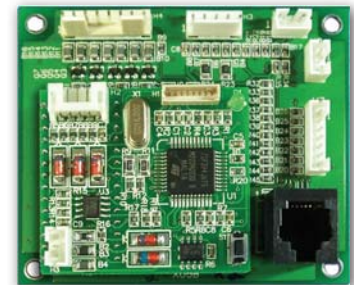
INNCOM by Honeywell's relays and controllers signal HVAC, lighting, and other devices. Relays extend INNCOM by Honeywell's smart digital thermostat functionality and provide switching capabilities for heating / cooling, lighting, and other loads. Built-in communications capabilities inherently support communications circuits, while auxiliary communications headers support external communications modules.

### X05B Expander Card

The X05B general purpose logic board provides a variety of I / O functionality. As part of the guestroom EMS, the X05B receives control signals from the room's e528 thermostat through either an S5 bus wired connection, the TXR505.R IR5 wireless transceiver, or the PC502.2 wireless RF protocol converter. The X05B then outputs control signals from the IRAS to X06 relay pack contacts. The unit typically mounts to the X06 or on an extrusion rail.

#### Product Specification

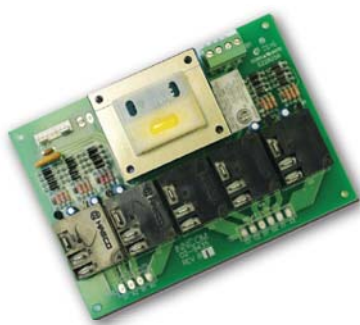
- Two 0–10VDC analog inputs and outputs
- 5 digital outputs for relay control
- 6 digital inputs
- 2 TTL expander ports
- X06 relay board interface
- Voltage: 12VDC
- Wired S5 bus communications



PN: X06-X05B

#### Available Configurations / Upgrade Options

- X05B-510—Five output only option
- X05B-511—Five input only option
- X05B-512-0–10VDC outputs



### V50H Expander Card

The V50 is a five-relay printed circuit board assembly that is designed to provide line-voltage control capabilities for controllers. The unit is powered by an external 24VAC transformer and feeds power to the controller through an 8-pin cable assembly.

#### Product Specification

- Power In: 24VAC 60/60 Hz (V50)
- Power In: 120/240 VAC 50/60 Hz (V50T)
- Relay Outputs: 120/240/277 VAC

PN: 02-9435.H



### X10 Low-Voltage Interface

The X10 general purpose logic board provides a variety of I / O functionality for a variety of lighting, amenity, and HVAC applications. The X10 is provided in a DIN rail housing and is used in conjunction with the X06.DIN, D254.DIN, D254.FET, or X05R in a load center application

#### Product Specification

- DIN rail mountable
- Voltage: 12VDC
- Wired S5 bus or wireless RF communications
- 2 analog inputs
- 2 analog outputs
- 8 digital inputs
- 8 digital outputs



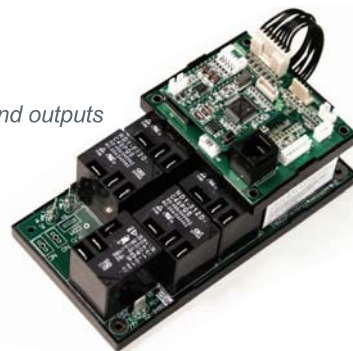
PN: 01-9593.R0P

### X06 Relay Pack Series

The X06 relay pack extends or expands Smart Digital Thermostat functionality for the INNCOM by Honeywell IRAS. When coupled with the e527, e528, or e529, it provides the logic and up to five 30A general purpose load switching controls for a variety of HVAC, PTAC, and FCU applications. When coupled with the MODEVA, EVORA, Designer Series, or S-Series switch, the X06.DIN provides the actuation required for lighting and drapery control applications. The X06 participates in the IRAS by wired S5 bus communications, a TXR505 for wireless IR communications, or the PC502 for wireless RF communications.

#### Product Specification

- Voltage: 100–277VAC
- Relay contact rating: 30A / 15A 100–277VAC
- 12VDC 400mA power supply
- Two 5VDC analog inputs
- 2 remote thermistor inputs
- Wired S5 bus communications
- Two 0–10VDC analog inputs and outputs
- 6 digital inputs
- 2 TTL expander ports



PN: X06-X05B



#### Notes:

---

---

---

---

---

---

---

---

---

---

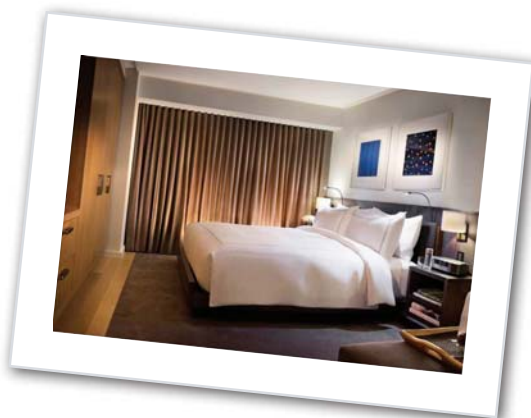
---

---

## CONRAD HOTELS & RESORTS™



*The CONRAD Hotel, located in Lower Manhattan, is one of New York's top rated luxury hotels, with INNCOM® by Honeywell MODEVA glass lighting switches and Networked Energy Management Systems.*





### X47 Universal Relay Pack

The X47 Universal Relay Pack is an INNCOM Integrated Room Automation System (IRAS) device designed for guestroom controls. The X47 provides five relay outputs used to switch a variety of loads, including fan coil units (FCU) and light-duty general loads. The X47 can integrate with and receive data from multiple points throughout the IRAS using low-voltage wired communication (S5 bus), infrared (IR) communication (when connected to IR Eye 5), or radio frequency (RF) communication (when connected to a PC502). The X47 comes in 24VAC (low-power) or 100–277VAC (line-power) versions.

#### Product Specification

- 201-147-A3L6-RXGR Class-2 Output Voltage/Power: 12VDC, 240mA
- 201-147-B1L6-RXGR Class-2 Output Voltage/Power: 12VDC, 200mA
- Temperature range, Operating Storage: 32 to 140 degrees F (0 to 40 degrees C), -40 to 158 degrees F (-40 to 70 degrees C), 15 to 99 percent RH

PN: 201-147-A3L6-RXGRP
PN: 201-147-B1L6-RXGRP



### X06.DIN.US / CN Relay Pack

The X06 relay pack extends or expands Smart Digital Thermostat functionality for the INNCOM by Honeywell IRAS. When coupled with the e527, e528, or e529, it provides the actuation for controls for a variety of HVAC, PTAC, and FCU applications. When coupled with the MODEVA, EVORA, Designer Series, or S-Series switch, the X06.DIN provides the actuation required for lighting and drapery control applications. The X06.DIN participates in the IRAS by wired S5 bus communications or by using a TXR505 for wireless IR communications or the PC502 for wireless RF communications. The X06.DIN is specifically designed with CE Mark / International applications in mind. The X06.DIN is available in a DIN rail mountable enclosure.



#### Product Specification

- DIN rail mountable
- Voltage: 12VDC
- 2 analog inputs
- 2 digital outputs
- Relay contact rating: 100–277VAC, 30A / 15A
- 1 general purpose I / O
- Wired S5 bus communications

#### Available Configurations / Upgrade Options

- X06-DIN.US—UL, CE Mark listed BOM
- X06-DIN.CN—CQC listed BOM

PN: 01-9919.US.P
PN: 01-9919.CN.P



### X08 Drapery Controller

The X08 drapery controller is purpose built to control third-party drapery and sheer products. This product can provide drapery / sheer open, drapery / sheer stop, and drapery / sheer close functionality. The X08 is mounted into an American single gang form for easy installation into standard wall boxes. The X08 participates in the IRAS by wired S5 bus communications, a TXR505 for wireless IR communications, or the PC502 for wireless RF communications.



#### Product Specification

- Voltage: 12VDC
- Relay contact rating: 24VDC, 100mA
- 2 analog inputs and 2 digital outputs
- 1 general purpose I / O
- Wired S5 bus communications

01-9916.WH.P	Programmed, White
01-9916.BK.P	Programmed, Black
01-9916.LA.P	Programmed, Light Almond
01-9916.EA.P	Programmed, Almond



### X05R.8 Relay Pack

The X05R extends or expands the INNCOM by Honeywell IRAS lighting controls, drupe controls, and HVAC controls to switch a wide variety of loads for many different applications. The X05R has a small footprint and provides up to eight 15A relays (120–240VAC switched output: see datasheet for specific ratings based on load type) sharing a single common for every two relays. The X05R is available in a DIN rail mountable enclosure. This product requires an external 12VDC power supply, typically the PS564.DIN.

#### Available Configurations / Upgrade Options

- X05R.US—UL, CE Mark listed BOM
- X05R.CN—CQC listed BOM



#### Product Specification

- DIN rail mountable
- Voltage: 12VDC
- Relay contact rating: 100–240VAC
- 1 digital input
- Wired S5 bus communications



01-9837.US.P	Universal Relay Pack Programmed, UL listed
01-9837.CN.P	Universal Relay Pack Programmed, CQC listed

### X05W Williams FCU Controller

The X05W controls the Williams FCU model ER006W2B403R182 from an INNCOM by Honeywell thermostat by modulating cooling, heating, and fan motors and using a switched relay output for heat enable. It also provides inputs for monitoring and controlling discharge air temperature. The X05W is available in a DIN rail mountable enclosure. The X05W can also be used in other HVAC applications as well as in master contactor applications, dimmable ballast control, and other HVAC applications.

#### Product Specification

- DIN rail mountable
- Voltage: 24VAC
- Relay contact rating: 100–277VAC, 30A
- Three 0–5VDC analog inputs
- Two 0–10VDC analog outputs
- 2 digital inputs and outputs
- Expansion I / O
- Wired S5 bus communications

#### Available Configurations / Upgrade Options

- X05W.US—UL, CE Mark listed BOM
- X05W.CN—CQC listed BOM



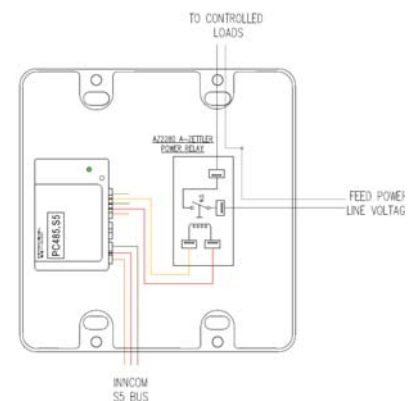
01-9835.US.P	Williams FCU Controller Programmed, UL listed
01-9835.CN.P	Williams FCU Controller Programmed, CQC listed

### X09 Master Relay

The X09 Master Relay is an INNCOM Integrated Room Automation System (IRAS) device designed to control lighting and switched outlet circuits in rooms. The X09 is a kit consisting of an INNCOM PC485 Protocol Converter and a 30 amp. rated relay. This kit can be augmented by an S217 switch to provide added functionality. It can also be paired with a 250 mA or 1A power supply if a low-voltage power source is needed in the room configuration.

INNCOM's PC485 provides the interface between INNCOM's EMS system (thermostat) and the relay controlling power to unit controlled lighting loads. The relay performs an On / Off function based on unit occupancy status.

01-9905.P	Single Relay 30 amp Capacity
32-1046	These parts combined make up the X09

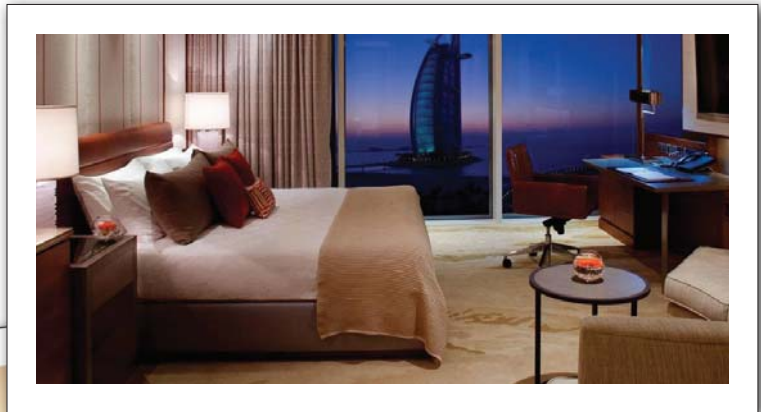


# Jumeirah

BEACH HOTEL

*With its striking wave-like design, this five-star resort is one of Dubai's most instantly recognizable structures.*

*All the hotel's 617 rooms, suites, and villas are luxuriously furnished and provide spectacular views of the Arabian Gulf.*



*INNCOM installed a networked energy management system including MODEVA glass thermostats, lighting, and TBL-80 touch sensor bedside controls.*



RELAYS & CONTROLLERS

## Light Switches / Lamp Controls / Load Center Dimmers

INNCOM by Honeywell has a portfolio of controls and dimmers to meet nearly any requirement for the hotel guestroom. MODEVA, EVORA, Designer Series™, and S-Series™ offer a wide range of control points for lighting, drapes, and door chimes. These systems also combine status indication for functions such as Privacy, Make Up Room, Butler call, and other functionality. When used as a component within the IRAS, the system expands to transform the guestroom into an energy efficient, beautifully illuminated, and comfortably controlled environment to meet the needs of the most demanding guest.

**The INNCOM by Honeywell MODEVA, EVORA, Designer and S-Series** controls are designed to dim and switch incandescent, dimmable CFL, LED, halogen, electronic ballast, and non-dimmable 120–240VAC lamps. This is done by providing a flexible load actuating system for both gang box and load center applications. These systems communicate in the IRAS by using wired S5 bus or wireless IR or RF Deep Mesh technology. This allows load center dimmers such as the D254 series, the L506 Edison socket dimmer, or the L510 floor / desk lamp dimmer to seamlessly integrate with the MODEVA, EVORA, S-Series, and Designer Series to transform the guestroom into a beautifully lit environment.



*Marriott SpringHill Suites in Latrobe, PA, opened in 2012 with INNCOM by Honeywell's Networked RF Energy Management System installed.*

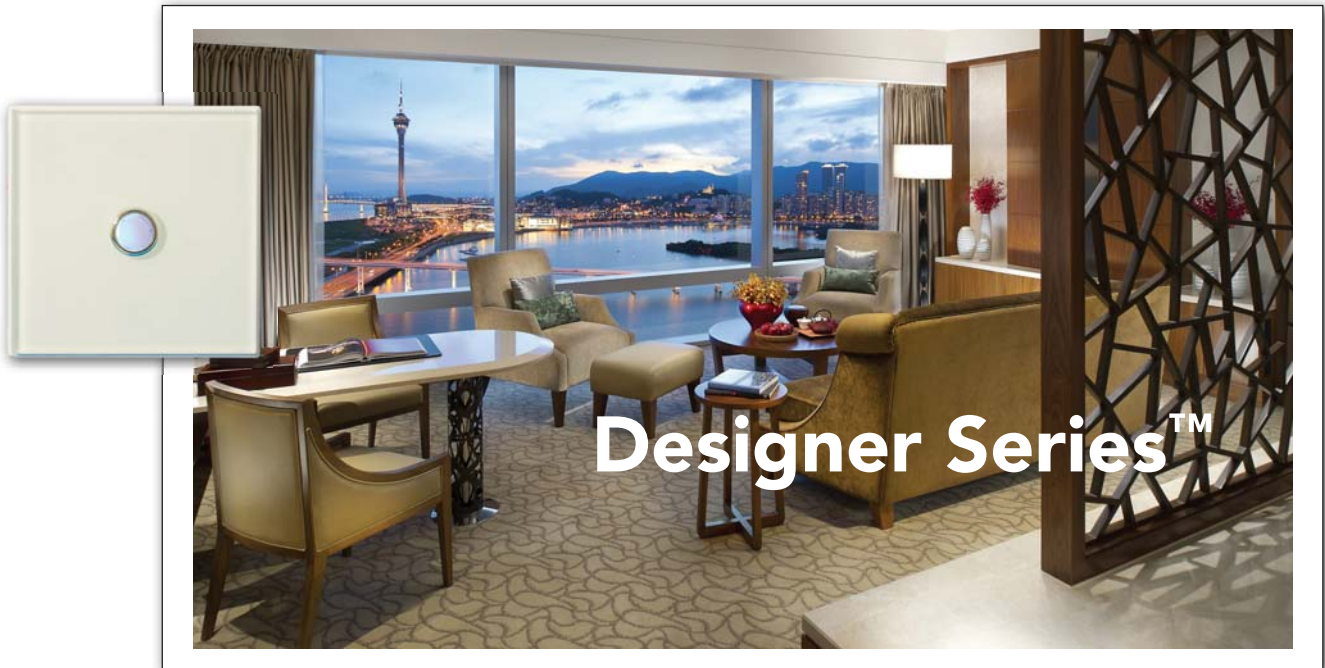
**The INNCOM by Honeywell MODEVA, EVORA, and S-Series** controls use a 2.4Ghz RF transceiver for Deep Mesh wireless communications. Deep Mesh is a wireless protocol based on the IEEE standard 802.15.4 that is optimized for INNCOM by Honeywell's guestroom and backhaul networked systems. Deep Mesh can also be used to integrate to third-party systems such as third-party Zigbee devices, door locks, and minibars to allow these devices to report status information to the BMS INNcontrol 3.

**The INNCOM by Honeywell MODEVA and EVORA** are equipped with gently backlit user interfaces and key pads. The backlight illumination can be adjusted based on the ambient light level in the room. This allows MODEVA and EVORA to gently illuminate the user interface at night so as not to disturb the sleeping guest while still allowing them to find the bathroom light switch. The backlight increases during the day so that the keys can be easily read even when the room is illuminated by daylight.

**The INNCOM by Honeywell MODEVA system** uses a capacitive touch user interface that allows INNCOM by Honeywell to work closely with the Hotelier to design a customized color, look, and feel to create a brand standard for control points. EVORA and S-Series are available in four standard colors that, through a tight quality control process, meet industry standards for white, almond, light almond, and black Decora frames and cover plates offered by third-party vendors. These two approaches are designed to meet the expectations of even the most demanding interior designers and architects.



*Grand Hyatt Kuala Lumpur, the first Grand Hyatt hotel in Malaysia. This elegant, contemporary, and luxurious hotel with 370 guestrooms and 42 suites equipped with INNCOM by Honeywell Standalone EMS offers business travelers, tourists and local guests a sophisticated ambience. Situated in the Kuala Lumpur City Centre (KLCC) and right next to Kuala Lumpur Convention Centre, the hotel is within walking distance of the iconic Petronas Twin Towers, Suria KLCC, KLCC Park, and Dewan Filharmonik Petronas as well as the Golden Triangle shopping and entertainment district. The Pavilion Shopping Centre is less than a ten minute walk by the covered sky-bridge outside the hotel.*



The Designer Series™ DS12 is a multifunctional key equipped with status indicators for Doorbell, Privacy, Make Up Room, Butler call, lighting control, and other programmable functions. The DS12 is uniquely designed to be mounted into millwork or third-party hallway plates or to use INNCOM by Honeywell's screwless magnetic mounting plates for American and British gang boxes. Depending on the type of material used, the DS12 may be engraved or silk screened with icon or text to indicate switch function. Optional materials textures and colors for the key cap, barrel, and mounting give designers freedom to accommodate both functionality and fancy. Typically this product is coupled with the MCM4 for S5 bus communications to the IRAS to perform doorbell, lighting, and drape functions.



**Product Specification**

- Programmable key functionality when equipped with MCM4 Micro Controller Module
- Can be installed in millwork or gang boxes
- Can be used as standalone dry contact input
- Gently backlit key which can be used for status indication
- 5 / 8" diameter DS12 barrel dimension

*Please refer to the Designer Series ordering guide for more specific information and all part numbers.*

DS12-SYSTEM

**MCM4—DS12 Controller**

The MCM4 Micro Controller Module provides the logic and S5 bus communications interface for the DS12. The MCM4 can also be used to provide logic for momentary contact switch input from third-party equipment and interfaces towards INNCOM by Honeywell's IRAS.

**Product Specification**

- Provides logic for programmed DS12 functionality
- Supports 1–6 DS12s
- Provides up to 6 digital inputs for third-party interfaces
- Voltage: 12VDC for load center applications
- Wired S5 bus communication



PN: 01-9982-C0.P

## INNtouch™

The INNtouch™ guest annunciation device consists of an interior guestroom plate with two buttons and a door chime. It is matched with an exterior corridor wall plate featuring a doorbell and indicators for Privacy and Make Up Room requests.

The most common application is to substitute for doorknob tags while adding a doorbell to announce staff and other guests. With the addition of a small motion sensor inside the guestroom, INNtouch allows the staff to determine the occupancy of a room without knocking. Adding a small switch on the minibar allows staff to determine whether the minibar has been opened.

INNtouch operates on a standalone basis or seamlessly integrates with INNCOM's Centrally Controlled System to remotely display guestroom status to housekeeping or other departments. When a staff member or another guest presses the doorbell symbol on the exterior plate, the chime rings inside the guestroom. By pressing the Privacy button, the guest disables the bell and illuminates the Privacy indicator on the exterior door plate. Likewise, when the guest presses the Make Up Room button, it illuminates a green LED on the exterior door plate indicating a request for Housekeeping.

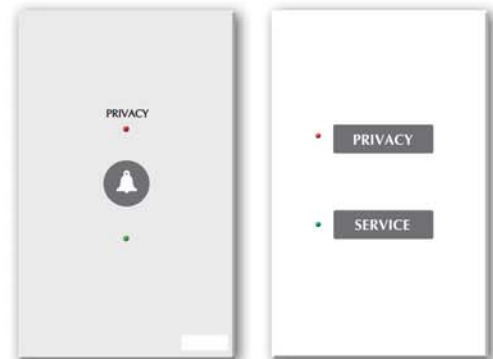
When a staff person presses and holds the doorbell, the plate, if equipped with a motion sensor, will flash "Privacy" when the room is occupied and will illuminate the green LED if the room is vacant. Likewise, if the minibar has a door switch, a staff member can press the bell button twice to determine if the minibar has been opened.

### FEATURES

- Higher security for guests
- Provides guests with greater control over staff intrusions
- Low cost installation
- Low-voltage wiring
- Occupancy detection



INNtouch is available in American gang plate size as well as British gang.



MODEVA Glass Series INNtouch kits

Please refer to the MODEVA ordering guide for more specific information and all part numbers.

Decora covers and plates need to be ordered separately, contact your salesperson or Authorized Systems Integrator.



01-9950.SPKY.RGWHP	Door Chime (Programmed): Chime; LED window left; Red LED (Privacy); Green LED (MUR); White housing
01-9950.SPKY.RGBKP	Door Chime (Programmed): Chime; LED window left; Red LED (Privacy); Green LED (MUR); Black housing
01-9950.SPKY.RGEAP	Door Chime (Programmed): Chime; LED window left; Red LED (Privacy); Green LED (MUR); Almond housing
01-9950.SPKY.RGLAP	Door Chime (Programmed): Chime; LED window left; Red LED (Privacy); Green LED (MUR); Light Almond housing

## Custom INNtouch™ Devices and Designer Switches



# EEC

INDUSTRIES LTD. *Manufacturers of Quality Signage Since 1973*

INNCOM by Honeywell has partnered with EEC Industries on many projects over the years to produce unique custom offerings for our clients. Using the INNCOM INNtouch and Designer Series switch technology, EEC is able to create a vast variety of housing shapes and finishes using a wide range of materials.

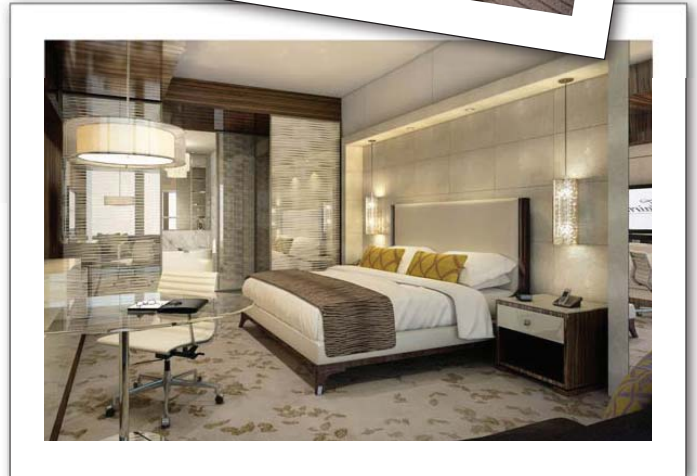
EEC Industries is the leading provider of architectural signs around the world and an INNCOM recommended Partner. From luxury hotels and resorts to a variety of commercial, institutional and multi-unit residential projects. Contact Henning Buch for more information call +1.604.986.5633



LIGHT SWITCHES / LAMP CONTROLLERS / LOAD CENTER DIMMERS

## Recent INNCOM by Honeywell Installed Hotel Openings

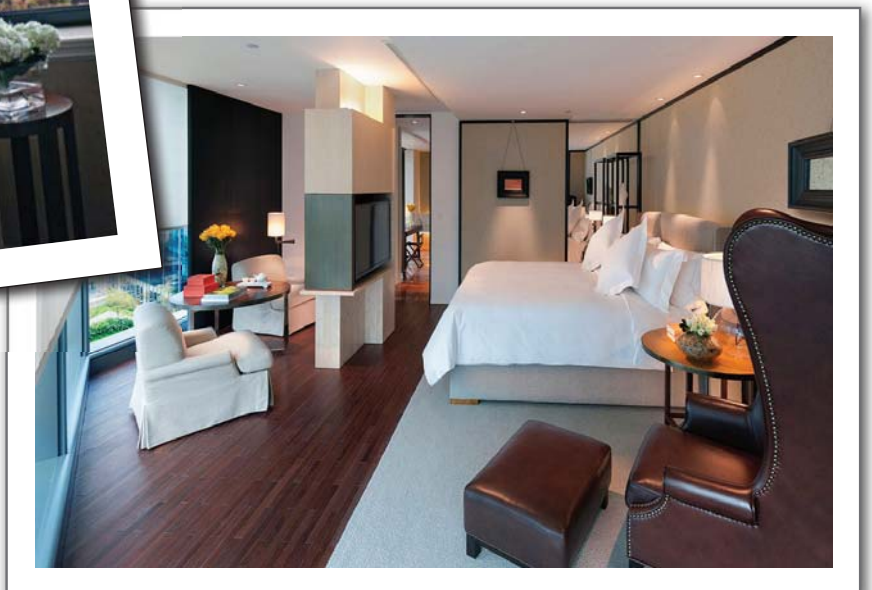
*Thompson Hotel Chicago*



*Fairmont Nanjing*



*JW Marriott Essex House*



*Mandarin Oriental Guangzhou*



The S-Series system provides dimmers, switched outputs, and low-voltage interfaces to meet nearly any gang box or load center lighting, temperature, drape, or amenities application. The S-Series uses a traditional keypad with up to 5 keys per device to provide an easy to use, powerful control point for the guestroom. INNCOM by Honeywell will work with the Hotelier, interior designer, or architect to define the key functionality and key artwork.

**Product Specification**

- Controls lighting, temperature, drapes, and amenities
- Available in American single gang for gang box dimming and load center applications
- 1–5 programmable keys
- Silkscreen or laser etch key text
- Fits standard Decora covers and plates (sold separately)\*
- Available in 4 standard colors
- Voltage: 100–120VAC 50 / 60Hz
- Dimming: 400W leading edge dimmer
- Relay contact rating: 100–240VAC, 500W
- Voltage: 12VDC for load center applications
- Wired S5 bus and IR or RF Deep Mesh wireless communication



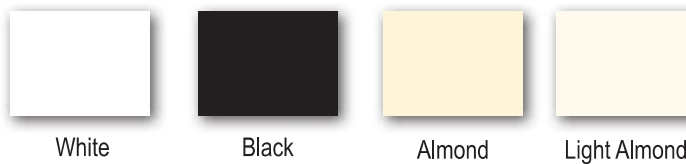
**Available Configurations / Upgrade Options**

- Nightlight model with 2 programmable keys
- Doorbell model with 2 programmable keys

*Please refer to the S-Series ordering guide for more specific information and all part numbers.*

SYSTEM-CONTROLLER

**Standard Colors:**



*\*Standard Decora covers and plates need to be ordered separately, contact your salesperson or Authorized Systems Integrator.*





British single gang single and double row button and slider switches

Above: a MODEVA TBL-70 sits on a bedside table

Right: American double gang switch with buttons and a dimmer bar

A single gang night light

MODEVA® is an elegantly designed, easy to use lighting, temperature, drape, and amenities control system. MODEVA uses a capacitive touch and screwless user interface for a sleek, modern, and highly configurable look. INNCOM by Honeywell will work directly with the Hotelier to design a unique user interface and create a brand standard for your guestroom controls. The MODEVA system uses a range of leading edge and trailing edge dimmers, non-dimming actuators, and low-voltage interfaces to meet nearly any gang box or load center lighting, temperature, drape, or amenities application. The MODEVA system is offered in a wide range of standard sizes from American single gang to British double gang to bedside controllers such as the TBL-70.

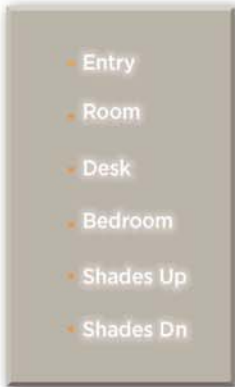
**Product Specification**

- Controls lighting, temperature, drapes, and amenities
- Fully customizable programmable capacitive touch user interface
- Soft background illumination
- Screwless magnetic mounting system
- Voltage: 120VAC–240VAC 50 / 60Hz for gang box dimming / switching applications
- Voltage: 12VDC for load center applications
- Dimming: 100–240VAC 650W leading edge or 350W trailing edge per control point
- Relay contact rating: 120–240VAC, 500W per control point
- Wired S5 bus and IR or RF Deep Mesh wireless communication



Please refer to the MODEVA ordering guide for more specific information and all part numbers.

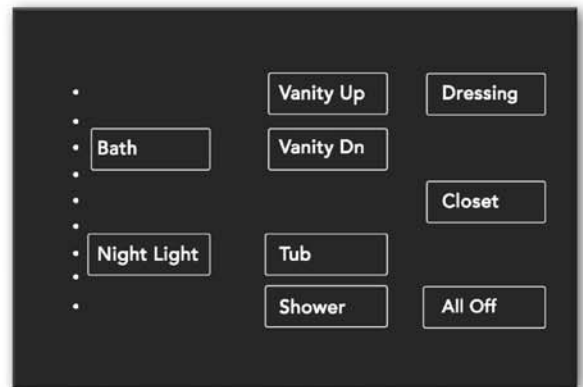
MODEVA-SYSTEM



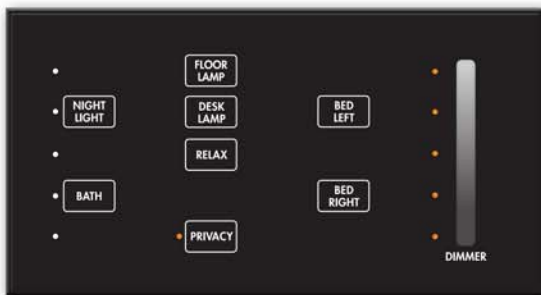
American single gang



American Double Gang



American Triple Gang with Nightlight



British Double Gang with Nightlight and Dimmer Bar



British Gang Thermostat



British Single Gang with Icons



American Gang Thermostats in Vertical and Horizontal Configurations



TBL-70 with MODEVA Faceplate  
Black is the only standard color on this product

Standard colors available are shown below. Custom colors selected from the Pantone matching system are also available at an additional cost.



INNCOM by Honeywell will provide font suggestions, but you may use any font you like. If it is a font we don't have, we may ask you to supply it. Our experience indicates that bold and simple fonts are generally best suited for guest facing devices.



EVORA™ is a beautifully designed, easy to use lighting, temperature, drape, and amenities control system. EVORA uses a traditional keypad with up to 5 keys per device to provide an easy to use, powerful control point for the INNCOM by Honeywell IRAS. The EVORA key pad is gently backlit, and INNCOM by Honeywell will work with the Hotelier to define the key functionality and key artwork. The EVORA system uses a range of leading and trailing edge dimmers, non-dimming actuators, and low-voltage interfaces to meet nearly any gang box or load center lighting, temperature, drape, or amenities application.

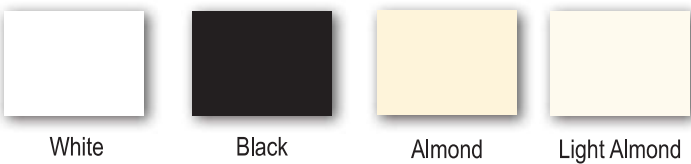
**Product Specification**

- Controls lighting, temperature, drapes and amenities
- 1-5 programmable keys
- Gently backlit keypad
- Fits standard Decora covers and plates (sold separately)\*
- Available in 4 standard colors
- Voltage: 120VAC–240VAC 50 / 60Hz for gang box dimming / switching applications
- Voltage: 12VDC for load center applications
- Dimming: 120–240VAC, 650W leading edge or 350W trailing edge dimmer per control point
- Relay contact rating: 120–240VAC, 500W per control point
- Wired S5 bus and RF Deep Mesh wireless communication

**Available Configurations / Upgrade Options**

- Nightlight model with 2 programmable keys
- Doorbell model with 2 programmable keys and programmable chime

**Standard Colors:**



Please refer to the EVORA ordering guide for more specific information and all part numbers.



**EVORA-SYSTEM**

\*Standard Decora covers and plates need to be ordered separately, contact your salesperson or Authorized Systems Integrator.



*Single Button*



*Two Button*



*Three Button*



*Three Button (B)*



*Four Button*



*Four Button (B)*



*Five Button*



*Nightlight*

## Lamp Controllers

INNCOM by Honeywell's S-Series lamp controllers enable or enhance remote control capability for freestanding guestroom lighting while maintaining local switching. These controllers allow lamp participation in the IRAS through wired S5 bus or wireless (RF) communications. Most can provide variable illumination control (either dimming or low-medium-high settings).



PN: 201-123

### L506.RF Lamp Controller

The INNCOM by Honeywell L506 lamp socket dimmer is a compact, easy to use, easy to install trailing edge lamp dimmer designed for tungsten, CFL, and LED lamps. The L506 provides remote control of the lamp for the INNCOM by Honeywell MODEVA, EVORA, S-Series, and Designer Series systems and can be used in conjunction with the SL210 to replace the lamp's inline switch.

#### Product Specification

- Easily screws into existing lamp E26 socket
- Voltage: 100–120VAC 60Hz
- Dimming: Up to 100W incandescent lamp
- Onboard switch replaces existing lamp switch
- Wireless RF Deep Mesh communications



### L208 Lamp Controller

The L208 floor or desk lamp dimmer provides remote control of the lamp for the INNCOM by Honeywell MODEVA, EVORA, S-Series, and Designer Series systems. It is available with a 400W leading edge dimmer or a 500W non-dimmable output. The L208 mounts discretely out of sight or to a wall. The L208 uses wired S5 bus and wireless RF for communications. The L208 can be equipped with the SL208.1 or used with SL210 to provide local and remote control.

#### Product Specification

- Voltage: 100–120VAC 50 / 60Hz
- Dimming: 400W forward phase dimming
- Relay contact rating: 120–240VAC, 500W
- Wired S5 bus and RF Deep Mesh wireless communication
- Wall mounting bracket

PN: 01-9901.D4.ZB.P

PN: 01.9901.R5.ZB.P



### SL208.1—L208 Local Lamp Switch

SL208.1 is a momentary contact switch designed to be used with the L208 and L506.RF product series. This switch provides local actuation control over the L208.

PN: 01-9074.208-1



## L206 Lamp Controller

The L206.RF lamp controller allows the guest to dim a lamp locally by rotating the switch or remotely from an INNCOM Integrated Room Automation System (IRAS) device. The L206 replaces the standard incandescent lamp socket to provide remote control capability. Adding an L206 series wireless module allows the lamp to be controlled from an INNCOM IRAS device equipped with an RF transceiver. The L206 series wireless modules provide full lamp dimming capability up to a 100W incandescent load.

### Product Specification

- Power: 115–220VAC1, 0.9A dimmable output 2
- Low Voltage / Current Consumption: 12VDC, 100mA
- Stand-by power Consumption: 2.5W
- Operating Environment: 0–40 C°



01-9961.115RF.BKP	Lamp Dimmer (Programmed) 115VAC, RF, Black
01-9961.220RF.BKP	Lamp Dimmer (Programmed) 220VAC, RF, Black



*INNCOM® by Honeywell blends interactive, eco-friendly in-room controls with stylish design at the Grand Hyatt DFW Hotel.*

*INNCOM by Honeywell's sleek, stylish, and energy efficient bedside control units and wall switches were customized to meet hotel design specifications.*

*When the Grand Hyatt DFW completed its \$13 million renovation, INNCOM by Honeywell played an integral role in the property's focus on energy conservation. To better blend in-room technology with the hotel's sophisticated welcome scene upon entering the room, INNCOM by Honeywell designed a new, sleek bedside controller for the Grand Hyatt DFW that enables guests to control lighting, temperature, drapes, sheers, privacy, make up room, and other service requests. The company also installed INNCOM by Honeywell's MODEVA series backlit glass switches and added the INNCOM by Honeywell drape controller that gives guests the ability to remotely open and close heavy-duty blackout drapes and sheers.*



# Marriott

Waikiki Beach Marriott Resort & Spa



*INNCOM by Honeywell implements a cost-effective, wireless room control network at Marriott Waikiki Beach Resort & Spa.*

*INNCOM by Honeywell Deep Mesh Network (DMN) architecture provides a low-cost, self-forming wireless network that is embedded into the thermostat, requiring a minimum amount of additional network hardware.*



